

间距 9.525 mm
Pitch .375"

栅栏式接线端子
Barrier Terminal Blocks

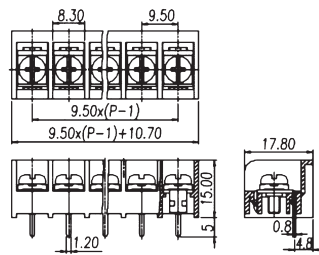
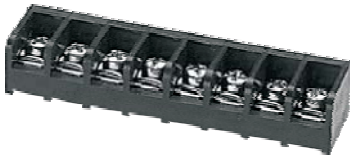
B 9.525T
接线端子参数

额定电参数
压线范围
螺钉力矩
外壳
工频耐电压
绝缘抵抗
使用温度

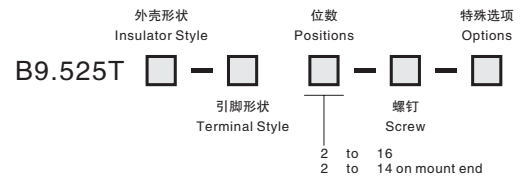
Rating
Wire Range
Screw/Torque Rating
Insulator Body
Insulation withstand Voltage
Insulation Resistance
Operating Temperature

300V, 25A
22~12 AWG
M3.5, 12Kgf c m
PBT, UL94 V0
AC2000, 1Min.
1000MΩ, DC500V
-40°C~+130°C

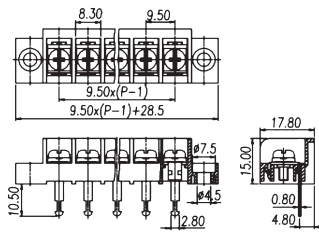
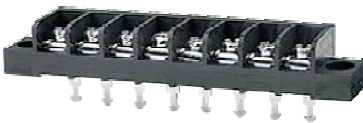
B 9.525T-HR



How to Order



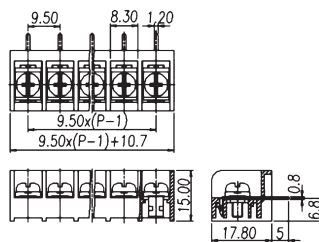
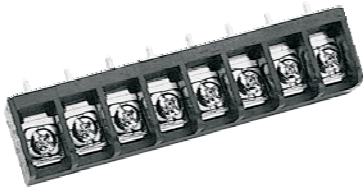
B 9.525T-HRI



外壳形状
Insulator Style

-/C: 无/有上盖 Without/With Cover
-/F: 无/有端部安装耳 Without/With Mount end

B 9.525T-VB



引脚形状
Terminal Style

见左图 See left drawing

螺钉
Screw

空白: 标准配置 Blank: Std. Screw

B 9.525T-VBI

